



Water Glass Investment Casting in Mining Machinery

Buy Discount Water Glass Investment Casting in Mining Machinery made in China. Zhiye is a Water Glass Investment Casting in Mining Machinery manufacturer and supplier in China. Ningbo Zhiye Mechanical Components Co.,Ltd. was founded in 2011. Mining machinery water glass investment casting is a lost wax investment casting procedure same as other investment castings. Higher precision and larger weight in the whole investment casting process are their main characteristics. Our Mining machinery water glass investment casting products have been exporting different foreign countries.



Product Description

Zhiye as a professional high quality Water Glass Investment Casting in Mining Machinery manufacturer, you can rest assured to buy Water Glass Investment Casting in Mining Machinery from our factory and we will offer you the best after-sale service and timely delivery.

Material:P10

Technique:Water Glass Investment Casting

Weight:1.6KG

Application Area:Mining Machinery

Product Name:Tooth holder

Anti-rust Method:Painting

Heat Treatment Way:Thermal Refining

Mining tools is a general phrase that refers to all the mining equipment and mining machines used to extract minerals from the earth. Our company can offer this procedure of Water Glass Investment Casting in Mining Machinery.

Mined minerals appear in almost every consumer product—from cars, to electronics, to jewelry and more. Minerals like uranium and coal are major energy sources that account for 50% of the US's energy supply.

Ningbo Zhiye Mechanical Components Co.,Ltd.

Phone:+86-18958238181

E-mail: santos@zy-casting.com

All of these resources are obtained through the use of various types of mining tools and mining equipment.

Before we begin identifying key mining tools and mining machines, it's important to understand the different types of mining methods for which these Water Glass Investment Casting in Mining Machinery are purchased from Ningbo Zhiye Mechanical Components Co.,Ltd. In China.

And here are some details about Water Glass Investment Casting for Mining Machinery following:





Application

Process: Investment Casting, Machining

Application: Vehicles&Accessories, Automobile&Train&Subway Parts, Hydraulic Machinery Parts, EngineeringMachinery Parts, Agriculture&Forestry Machinery Parts

Raw material: Iron, Carbon Steel, Alloy Steel, Gray Iron, Nodular Cast Iron

Weight Range: 0.1 To 150kgs

Heat treatment: Annealing, Normalizing, Quenching+Tempering

Surface Treatment: Oiled, Spay Painting, galvanized...

Certification: Approved ISO9001, TUV-PED, BV, LR, GL, DNV

Shape: Custom, OEM

Place of Origin: Zhejiang, China

Supply Ability: 12000 tons per year

Packaging Details: Wood Cases

Port: Shanghai or Ningbo

PRODUCT WE PRODUCE



Engineering Machinery Parts



Have more than 10 years of experience in the field of casting and processing, production process design, product according clients' drawings or samples, design the material as your mechanical property requirement

Technical Team

Quality Control >>>

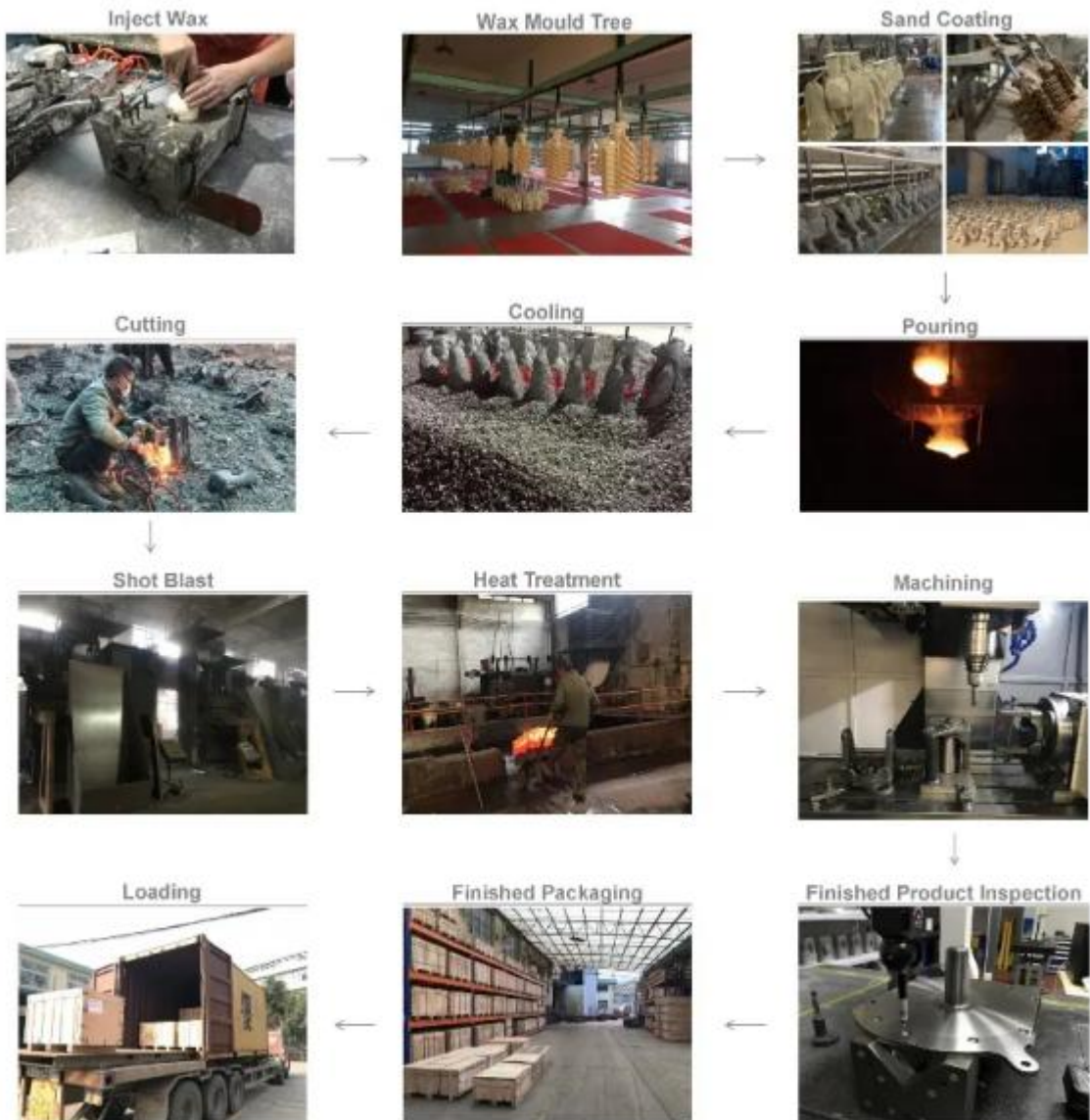
- A: Inspection Equipment :
Magnetic Powder, 3D, Three Coordinates
- B: Perfect quality system
- C: Tensile, Pressure test, Flaw Detection



PRODUCTION FIELD SHOW



PRODUCTION PROCESS



CERTIFICATION

We have already passed ISO9001, TUV-PED, BV, DNV-GL and LR approvals



PACKAGING & SHIPPING

We cover the entire world

Serve 80% of Europe, America and Australia



1.Q: Are you trading company or manufacturer?

A: We are factory with more then 15years experience.

2.Q: How long is your delivery time?

A: Generally it is 15-30days as we are Customized service we confirm with Customer when place order.

3.Q: Do you provide samples? Is it free or extra?

A: Yes we provide samples ,for sample charge as per sample condition to decide free or charged ,usually for not too much time used consumed machining process are free.

4.Q: What is your terms of payment? 3

0% T/T in advance ,balance before shipment ,Or as per discussion.

5.Q: Can we know the production process without visiting the factory?

A: We will offer detailed production schedule and send weekly reports with digital pictures and videos which show the machining progress.

6.Q: Available for customized design drawings?

A: Yes, DWG, DXF, DXW, IGES, STEP, PDF etc.

7.Q: Available for customized design drawings?

A: Yes ,we can sign the NDA before your send the drawing.

8.Q: How do you guarantee the quality ?

A: (1) Checking the raw material after they reach our factory----- Incoming quality control (IQC). (2) Checking the details before the production line operated. (3) Have a full inspection and routing inspection during mass production--- In-process quality control(IPQC). (4) Checking the goods after they are finished---- Final quality control(FQC). (5) Checking the goods after they are finished-----Outgoing quality control(QC). (6)100% inspection and delivery before shipment.